



PORTLANDER EST. 2012

WELLINGTON / NEW ZEALAND

LUNCH MENU

THE CHEESE BURGER (SGI*)..... \$26

21 day dry aged half pound beef burger, McClure's pickles, bacon, cheese, American mustard, ketchup, aioli, Clareville bakery milk bun. Served with thick fries.

MAKE IT A DOUBLE FOR \$35 (SGI*)
twice the beef, bacon and cheese.

SCHNITZEL BURGER.....\$21

Crumbed free range chicken breast, Scottys smoked bacon, swiss cheese, slaw, Clareville bakery milk bun. Served with thick fries.

THE STEAK SANDWICH\$21

Minute steak, jalapeno salsa, lettuce, tomato, caramelised onion jam, cheese. Charred sour dough.

PORTLANDER CAESAR SALAD (SGI*, DF*)..... \$18

Cos lettuce, bacon, parmesan, anchovies, Portlander's Caesar dressing, 62° slow poached egg, croutons. With grilled free range chicken breast

FISH & CHIPS (SGI*).....\$23

Pan fried or battered fresh market fish fillet, thick fries, tartare

BAO BUN BENEDICT \$18

Spicy pulled pork, poached eggs, slaw, Huffman's hollandaise, steamed bao buns

FAJITAS A LA PORTLANDER..... \$19

Crispy buttermilk chicken, slaw, spicy bbq sauce, quinoa and corn, salsa de queso, warm tortillas.

THE GRANARY (V, DF).....\$15

Fregola, quinoa, pearl barley with leaves, pumpkin seeds, preserved lemon, olive oil, peas - vegan

add zaney zues Ricotta for \$3

PEARL BARLEY 'RISOTTO ALFREDO' (V*)..... \$19

Alfredo' with a dollop of crème fraiche, scotty's smoked bacon, silver beet. Served with a crispy toasted Swiss cheese Panini

THE S.E.C.(SGI)..... \$28

Minute ribeye steak, poached egg and chips with café de welly butter

THE GREEK\$21

flat bread, spiced lamb meatballs, zaney zeus ricotta, leaves, pumpkin seeds, cucumber, yoghurt dressing

SIDES

MIXED LEAF SALAD (SGI, DF*)..... \$9

with parmesan and French vinaigrette

SEASONAL GREEN VEGETABLES..... \$9

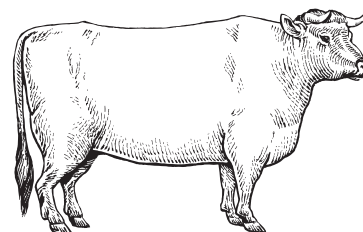
tossed with garlic butter and crispy pumpkin seeds



THICK FRIES (SGI, DF).....\$8

With ketchup

"Reality may not be the best of all possible worlds but it's still the only place where you can get a decent steak."



- Woody Allen



PORTLANDER EST. 2012

WELLINGTON / NEW ZEALAND

BEVERAGES

RED WINE.....125ML..... 250MLBTL

Pinot Noir

Duke of Cromwell, Central Otago.....\$11.5.....\$22.....\$63

Rock Bay, Martinborough.....\$11.....\$19.....\$54

Duck Hunter, Marlborough.....\$11.....\$21.....\$59

Shiraz

Yalumba Galway, Barossa Valley.....\$9.....\$17.....\$49

Merlot

Straw Island Merlot, Nelson.....\$9.....\$17.....\$45

Cabernet

Rock Bay, South Australia.....\$9.5.....\$17.....\$45

TAP BEERS.....FROM \$9 TO \$13

Heineken 350ml \$9

Heineken 500ml \$13

Monteith's Barber Lager \$10

Monteith's Apple Cider \$11

Monteith's XPA \$12

WHITE WINE.....125ML..... 250MLBTL

Chardonnay

Straw Island, Nelson.....\$8.5.....\$16.....\$43

Sauvignon Blanc

Straw Island, Nelson.....\$8.5.....\$16.....\$43

Bay of Stones.....\$9.....\$17.....\$44

Pinot gris

Straw Island, Nelson.....\$8.5.....\$16.....\$43

Babich, Marlborough.....\$10.....\$18.....\$49

Riesling

Coney Ragtime, Marlborough.....\$10.....\$19.....\$55

BOTTLED BEERSFROM \$7.5 TO \$17

Monteith's \$10

Black, Pilsner, Radler, Original \$9

Brewer's Series Double IPA 500ml \$17

Brewer's Series Porter Noir 500ml \$17

Brewer's Series Velvet Stout 500ml \$17

Heineken \$10

Heineken Light \$7.5

**also a range of spirits available*

NON-ALCOHOLIC BEVERAGES

SOFT DRINKS & MIXERS.....\$5

Coca Cola, Coke Zero, Diet Coke, Sprite

Schweppes Tonic Water, Soda Water, Lemonade

FRUIT JUICES.....\$5

Simply Squeezed Apple, Cranberry, Grapefruit,

Orange, Pineapple, Tomato

or your choice of Sparkling Water or Mineral Water

**full drinks menu available on request*

SGI - suitable for gluten intolerant DF - dairy free V - vegetarian *available

@PORTLANDER_   